

**28-30 Hythe Road**

London, NW10 6RR

## Prime Open Storage Yard

**5,425 sq ft**  
(504 sq m)

- Flexible terms available at competitive rents
- Close proximity to A40/A406
- Palisade fencing compound
- Away from residential area

# 28-30 Hythe Road, London, NW10 6RR

## Summary

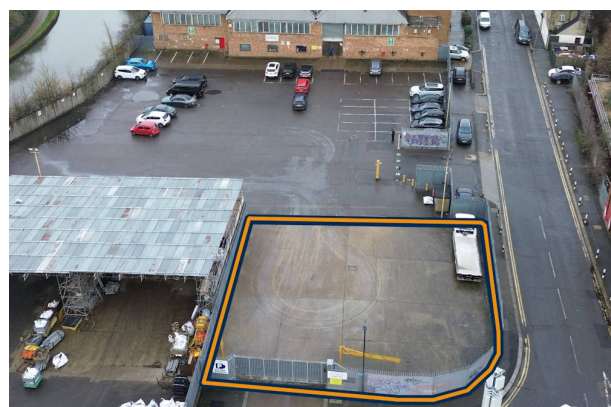
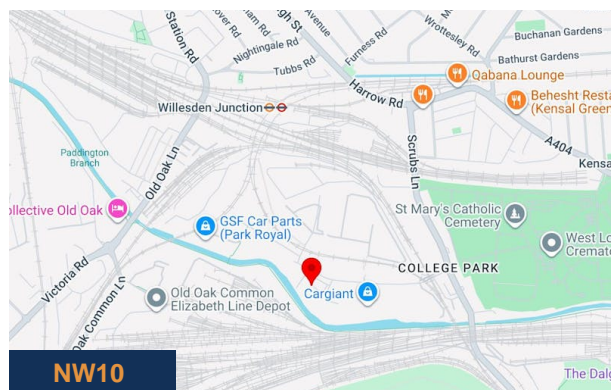
|                       |                                    |
|-----------------------|------------------------------------|
| <b>Available Size</b> | 5,425 sq ft                        |
| <b>Rent</b>           | £54,252 per annum                  |
| <b>Business Rates</b> | Upon Enquiry                       |
| <b>VAT</b>            | Applicable                         |
| <b>Legal Fees</b>     | Each party to bear their own costs |
| <b>EPC Rating</b>     | EPC exempt - No building present   |

## Description

Secure open Yard available to let in Hythe Road, ideal for a variety of different uses. Flexible terms available at competitive rates.

## Location

Situated within Apex Industrial Estate in Park Royal and is accessed via the A40 with excellent links to major motorways and Willesden Junction and White City Train Stations being close by offering good public transport links into Central London and beyond.



## Viewing & Further Information



**Tom O'Malley**

020 8429 9005 | 07522 700 508

[tom@davidcharles.co.uk](mailto:tom@davidcharles.co.uk)

The above information contained within this email is sent subject to contract. These particulars are for general information only and do not constitute any part of an offer or contract. All statements contained therein are made without responsibility on the part of the vendors or lessors and are not to be relied upon as statement or representation of fact. Intending purchasers or lessees must satisfy themselves, by inspection, or otherwise, as to the correctness of each of the statements of dimensions contained in these particulars. Generated on 19/06/2026