



## Coopersale Hall Farm, Fluxs Lane

Epping, CM16 7PE

### Freehold Industrial Estate With Development Potential

**1,906 to 8,501 sq ft**

(177.07 to 789.77 sq m)

- The only MOT centre in Epping
- M25 (2.5 Miles)
- 17 Miles From Central London
- Development Potential
- Kitchen & W/C Facilities
- Vacant Possession

# Coopersale Hall Farm, Fluxs Lane, Epping, CM16 7PE

## Summary

Available Size	1,906 to 8,501 sq ft
Price	£1,800,000
Business Rates	Upon Enquiry
VAT	Not applicable
Legal Fees	Each party to bear their own costs
EPC Rating	C

## Description

Comprising an industrial estate with a mix of industrial units along a large service road.

Unit 10 is an office unit with potential for redevelopment into another 2-3 industrial units.

Unit 11, the central unit, is a fully fitted MOT station and the only MOT station in Epping, this unit also has parking to the rear for 10+ vehicles.

Unit 12 is a modern industrial unit with 3 rolling shutters and could be subdivided into 3 smaller units, this units also contains a number of ramps for vehicle repairs as well as having office, kithcen and toilet facililties.

## Location

Located on Fluxs Lane, Epping off of Stewards Green Road and just 1 mile from Epping Underground Station. The estate also offers excellent road connections being just 17 miles from Central London via the M25 (2.5 miles) and M11 (5 miles).

## Accommodation

The accommodation comprises the following areas:

Name	sq ft	sq m	Rent	Availability
Unit - Unit 10	1,906	177.07	£15 /sq ft	Available
Unit - Unit 11	2,967	275.64	£20 /sq ft	Available
Unit - Unit 12	3,628	337.05	£20 /sq ft	Available
<b>Total</b>	<b>8,501</b>	<b>789.76</b>		

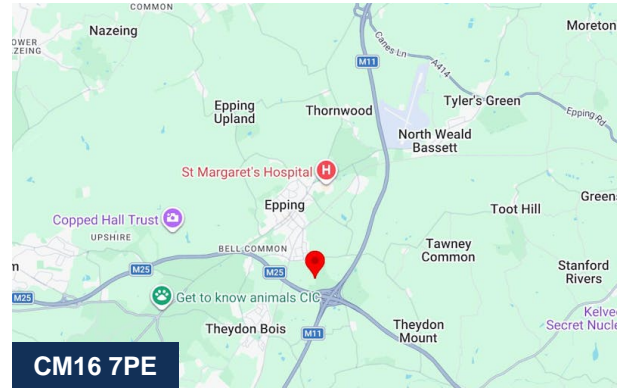
## Planning

Pre-app plans submitted to Epping Forest District Council have received a positive response, the plans propose the erection of two additional workshops in association with the existing commercial site. These will include 4 flexible workspaces, 1 x 1130sqft and 3 x 484sqft workshops.

These plans can be found at the bottom of the marketing brochure.

## Video

- Drone Video - <https://vimeo.com/1152932759?share=copy&fl=sv&fe=ci>



## Viewing & Further Information

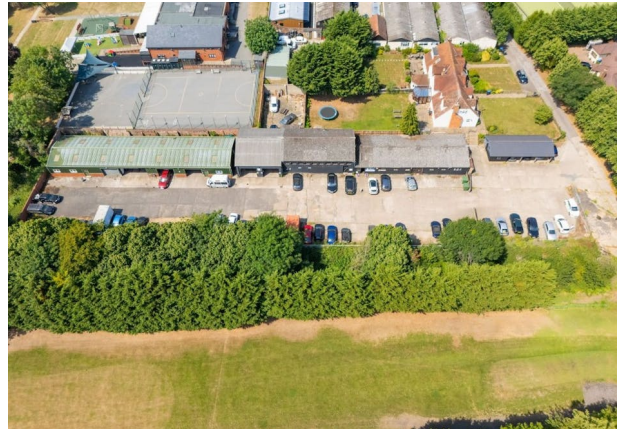


**George Moriarty**

020 8429 9003 | 07522 700 507

[george@davidcharles.co.uk](mailto:george@davidcharles.co.uk)

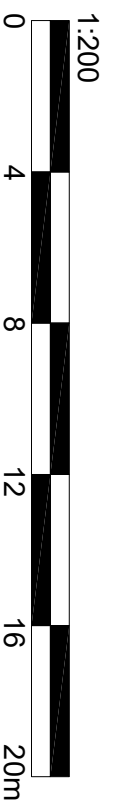
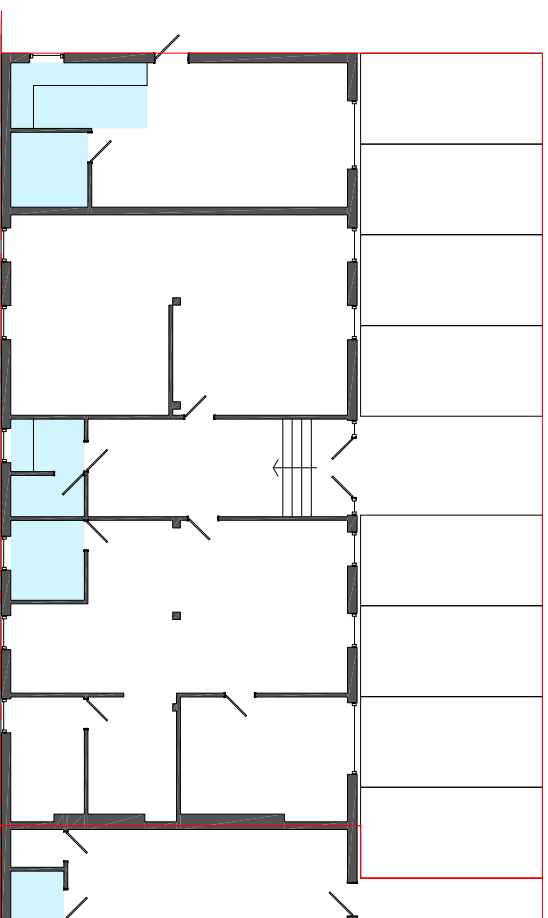
The above information contained within this email is sent subject to contract. These particulars are for general information only and do not constitute any part of an offer or contract. All statements contained therein are made without responsibility on the part of the vendors or lessors and are not to be relied upon as statement or representation of fact. Intending purchasers or lessees must satisfy themselves, by inspection, or otherwise, as to the correctness of each of the statements of dimensions contained in these particulars. Generated on 07/05/2026



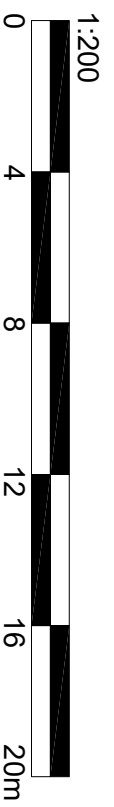
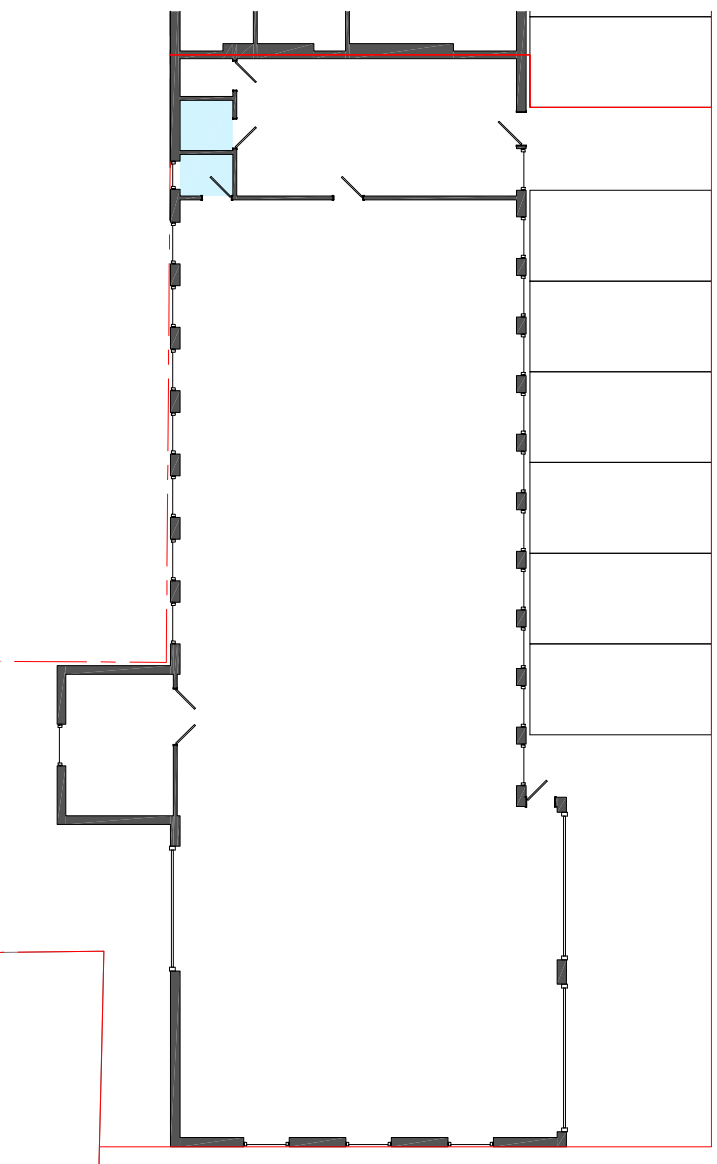




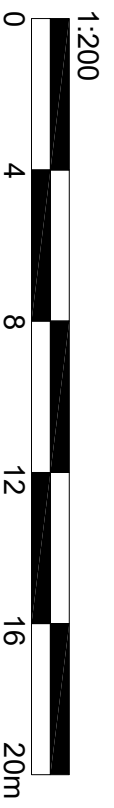
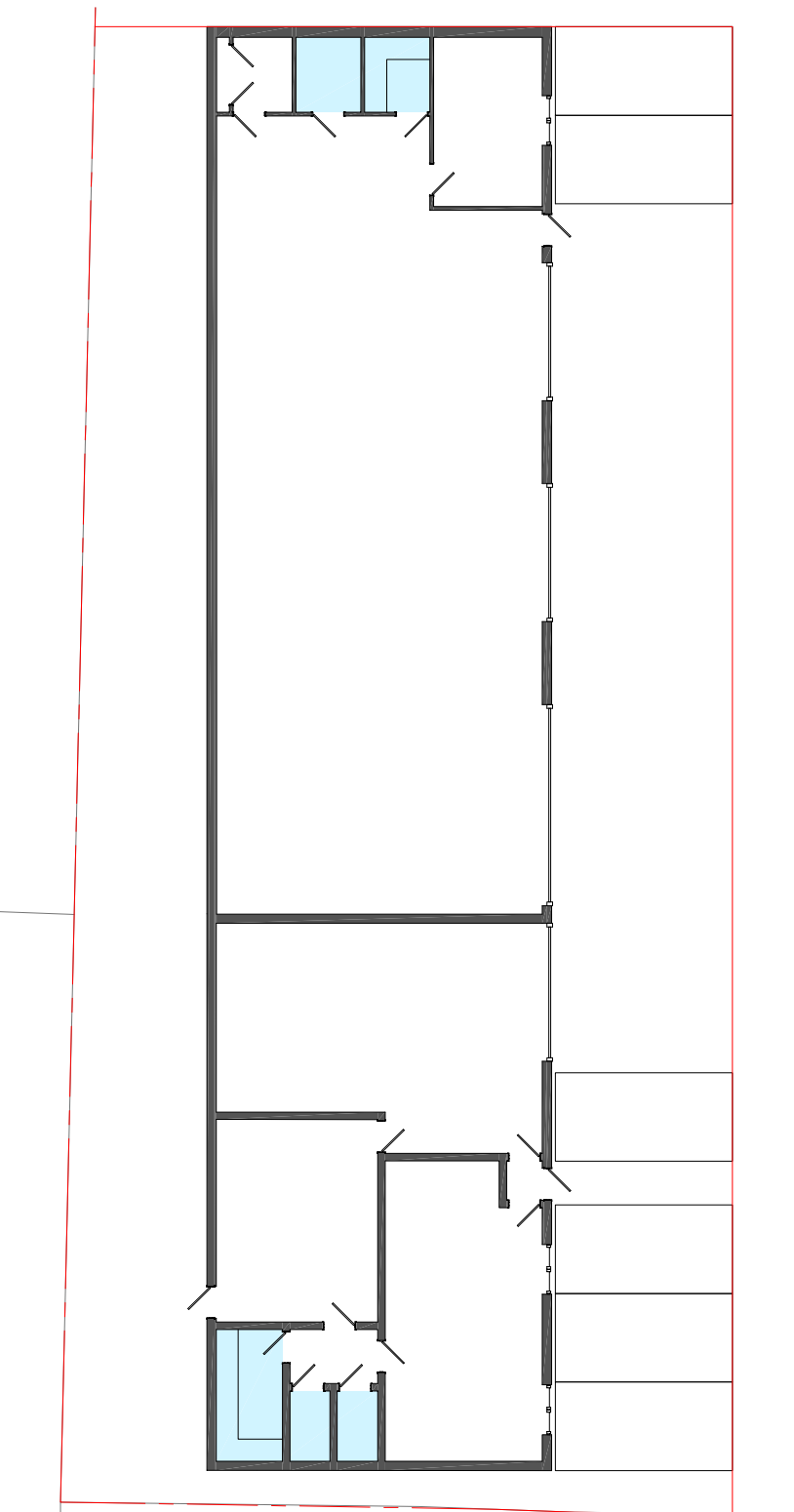




Coopersale Hall Farm, Fluxs Lane,  
Unit 10 - 1,906ft<sup>2</sup> (177.07m<sup>2</sup>)



Coopersale Hall Farm, Fluxs Lane,  
Unit 11 - 2,967ft<sup>2</sup> (275.64m<sup>2</sup>)



Coopersale Hall Farm, Fluxs Lane,  
Unit 12 - 3,628ft<sup>2</sup> (337.05m<sup>2</sup>)

# PROPOSED COMMERCIAL BUILDINGS - COOPERSALE HALL FARM FLUX'S LANE, EPPING CM16 7PE

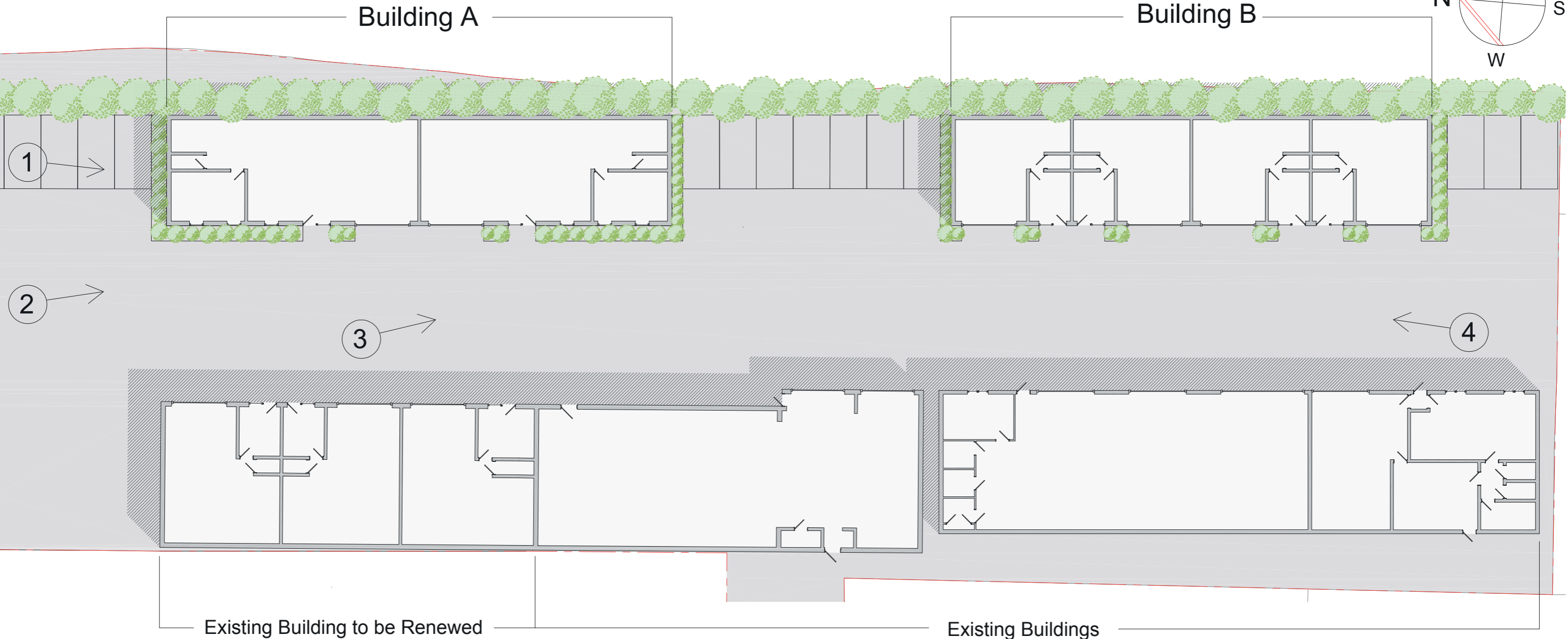
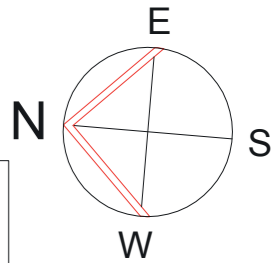


Image 1

Image 2

Image 3

Image 4



## Area Schedule

Building A G.I.A 213.47m<sup>2</sup>

Building B G.I.A 202.93m<sup>2</sup>

Existing Buildings G.I.A 787.43m<sup>2</sup>

TOTAL G.I.A 1203.83m<sup>2</sup>

